



**Syrris Ltd.**  
27 Jarman Way, Royston, Hertfordshire  
SG8 5HW, United Kingdom  
T: +44 (0)1763 242555  
F: +44 (0)1763 242992  
E: info@syrris.com  
W: www.syrris.com

**Syrris Limited**  
Registered office as address  
Company No. 4257809

Subject	Changing the valves on an Atlas syringe pump
Date	16-MAR-2015
Author	Rory Parsons

1. Make sure the pump is in Dual Dosing mode.
2. Firstly, access the 'OTHER COMMANDS' in the pump menu.

```
→3) OTHER COMMANDS  
4) CONFIGURATION
```

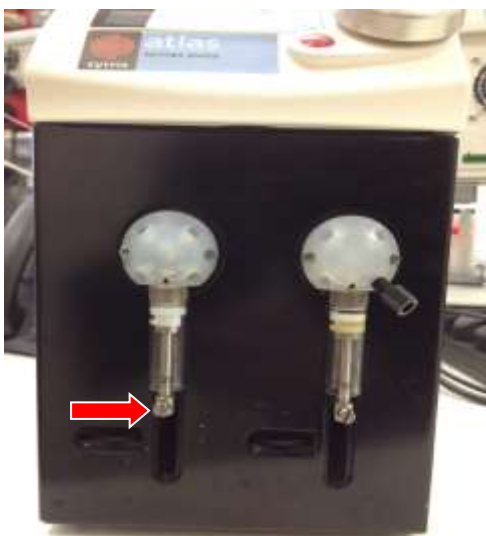
3. Select 'EMPTY SYRINGE' and empty the contents of the syringe safely.

```
→5) EMPTY SYRINGE  
6) INITIALISE
```

4. Select 'INITIALISE' to set the Syringe to the home position where the syringe plunger is closest to the valve.

```
5) DEFAULT EMPTY: B  
→6) INITIALISE
```

5. With the syringe plunger now at the bottom, unscrew the connecting screw and remove from the pump (indicated by the red arrow).

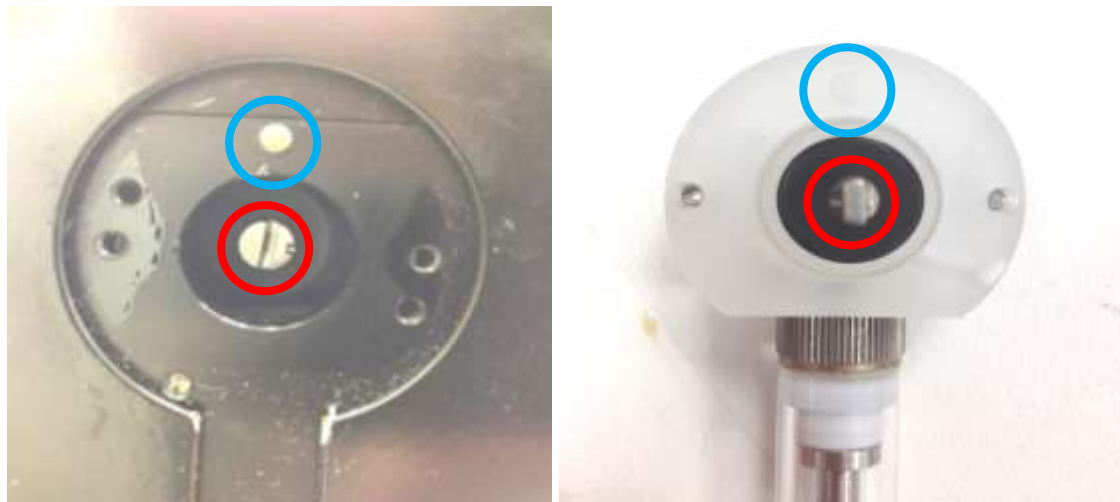


6. Using a 3/32" allen key, removes the screws that fix the valve to the face of the pump and remove the valve and syringe (indicated by the red arrows).



7. Located on the face flush with the pump is a small silver Grub screw which holds the syringe in place which must be removed before unscrewing the syringe using a 1/16" allen key. Do not try to screw/unscrew syringes with the small grub screw in place.
8. The Syringe can now be safely unscrewed and removed, including the PTFE spacer. Any additional O-rings and Blanking Plugs may also be removed.
9. The syringe is fixed into the replacement valve before placing the valve onto the face of the pump. Please ensure to take care when screwing the syringe into the PCTFE valve to avoid cross-threading the valve. If any resistance is felt, remove the syringe and re-thread carefully. Please ensure not to overtighten the syringes or use tools. Syringes should be finger tight and tools must not be used

10. To place the valve onto the front of the syringe, the locating pin (blue circle) and the notched barrel (red circle) are aligned and the valve inserted into the front of the pump.



11. The holding screws are then screwed into the valve, securing it to the front of the pump using a 3/32" allen key. Return the connecting screw to the base of the syringe and tighten by hand. Using a flathead screwdriver, tighten the screw by one half turn.
12. Ensure that all O-rings and Blocking ports are returned to their correct ports before using the valve.
13. Finally, select 'INITIALISE' to store all the settings. The syringe pump is now ready for use.

```
5) DEFAULT EMPTY: B  
→6) INITIALISE
```